



# **SAFETY CLOUD<sup>®</sup>**

**POWERED BY HAAS ALERT**

## **Advanced Collision Prevention**

From The Leaders Of Connected Safety

---

**2022**



# Safety Cloud<sup>®</sup>

## Safety Cloud

Safety Cloud by HAAS Alert is the world's leading collision prevention and digital alerting service dedicated to the safety of first responders, emergency assist, and roadway operations fleets.

Safety Cloud protects responders and enhances emergency alerting by delivering real-time, in-vehicle notifications to approaching motorists of an upcoming hazard, allowing them more time to proactively slow down and move over.





### **Collision Prevention**

Improve driver awareness to protect responders and workers.



### **Connected and Autonomous Vehicles**

Stream real-time public safety and hazard information to in-car displays and automated driving systems.



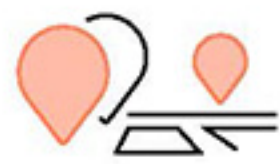
### **Move Over Compliance**

Provide more time for drivers to safely slow down and move over.



### **Interoperability**

Optimize interagency coordination, community response, and mutual emergency aid with a dedicated safety platform.



### **Real-Time Situational Awareness**

Monitor fleet location and emergency status in a customized dashboard on any device.



### **Smart City Catalyst**

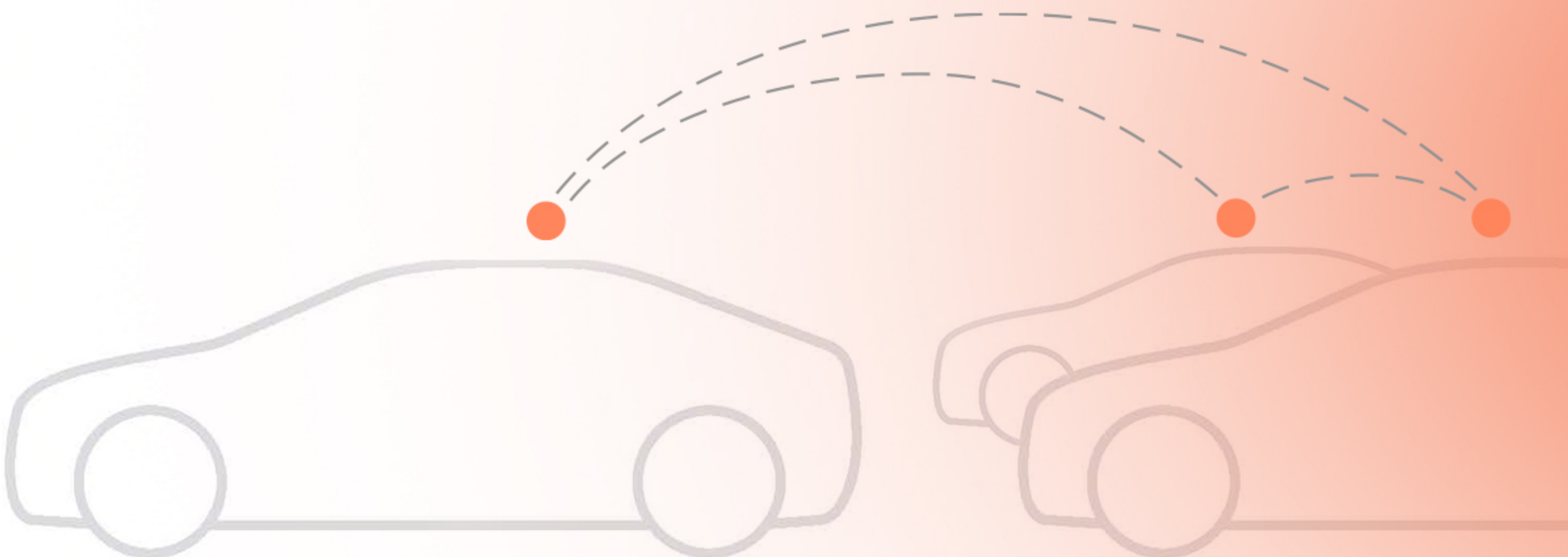
Enhance connected infrastructure, traffic management centers, variable message signs, and other applications with real-time data.



# Digital Alerting

Digital alerting is the modern evolution of emergency alerting on the road.

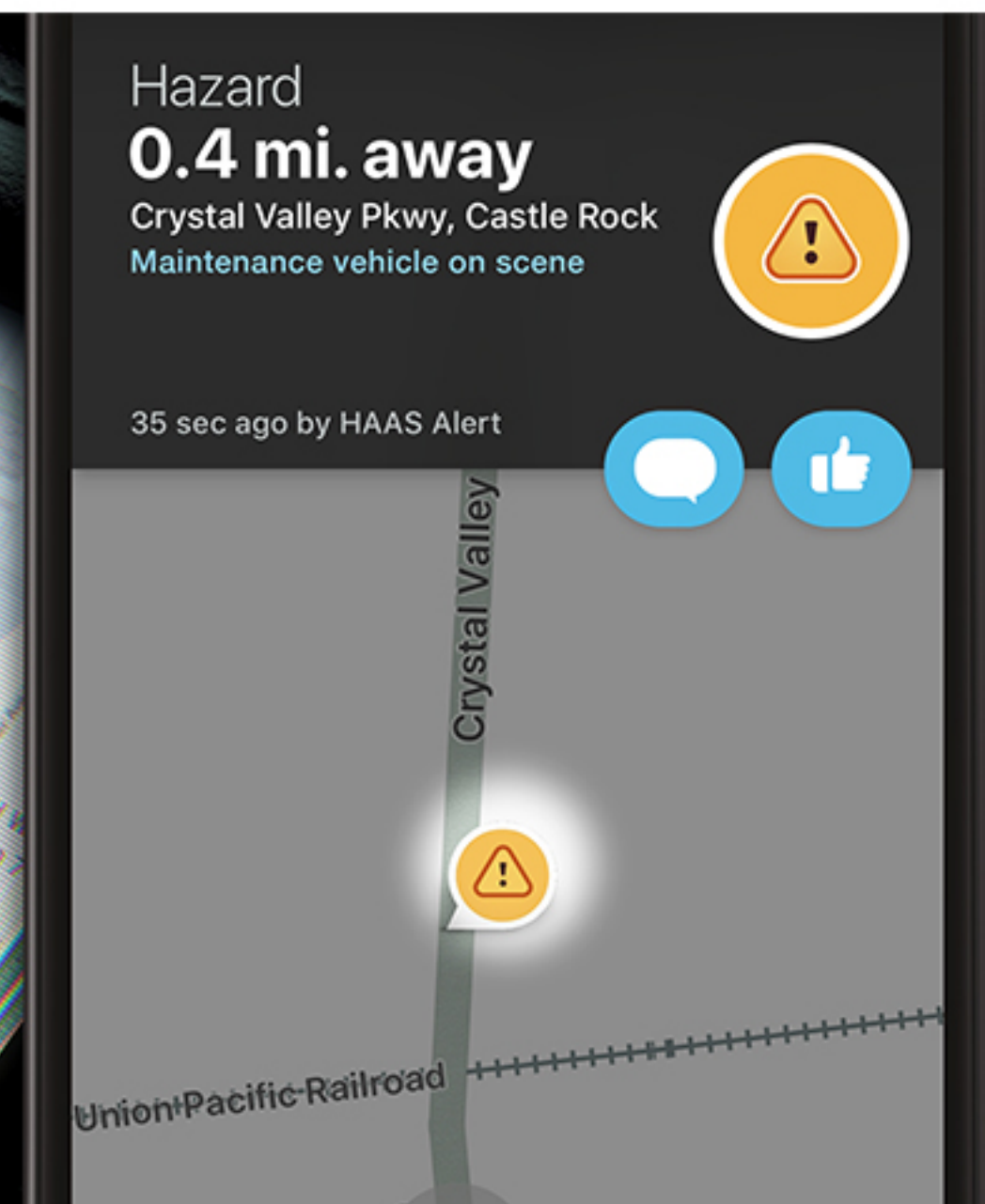
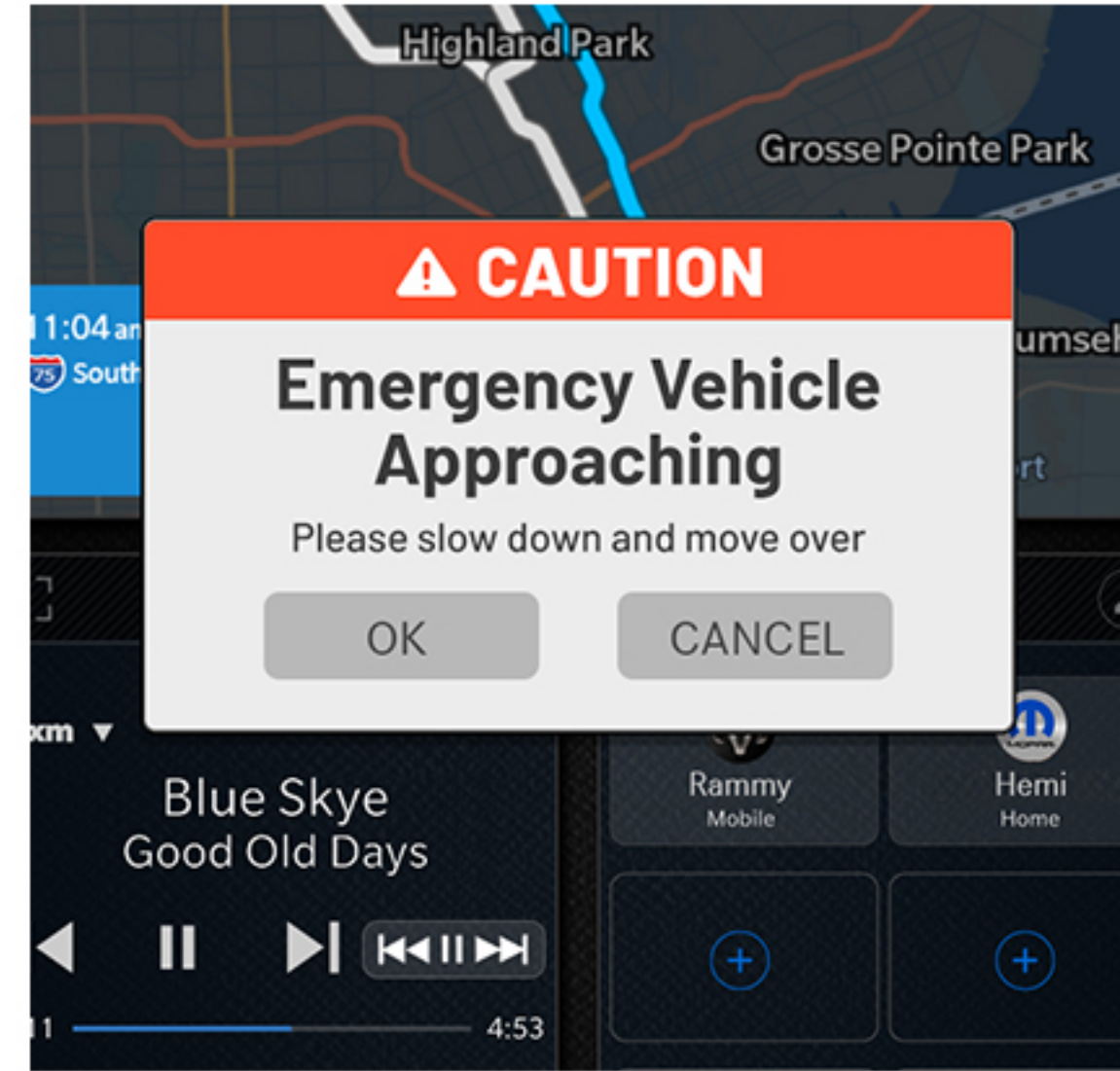
When responders and road operators activate their lightbars during an incident response, Safety Cloud instantly begins delivering real-time notifications through cellular networks directly to motorists and vehicles in a way they can't miss.



# Alerts Delivered

Safety Cloud digital alerts are delivered to motorists through both navigation applications and connected vehicles. All motorists can receive Safety Cloud alerts through the free-to-use navigation app Waze, accessible on mobile devices and in-dash systems utilizing Apple CarPlay and Android Auto.

Drivers of 2018-and-newer Jeep, Dodge, Ram, Chrysler, and Alfa Romeo vehicles can receive Safety Cloud alerts directly in the infotainment screen through the EVAS (Emergency Vehicle Alert System) feature as part of the UConnect system.



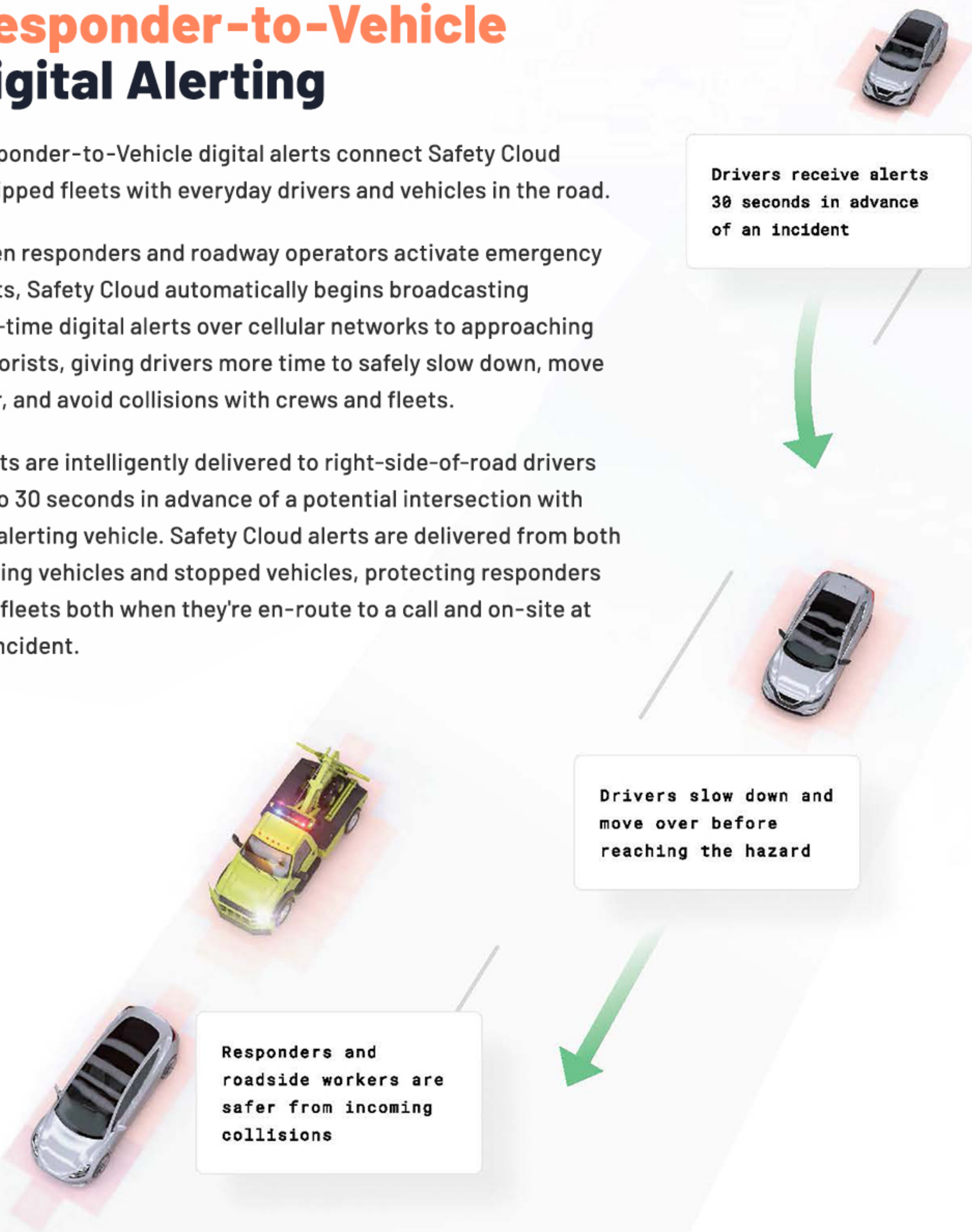
# R2V<sup>TM</sup>

## Responder-to-Vehicle Digital Alerting

Responder-to-Vehicle digital alerts connect Safety Cloud equipped fleets with everyday drivers and vehicles in the road.

When responders and roadway operators activate emergency lights, Safety Cloud automatically begins broadcasting real-time digital alerts over cellular networks to approaching motorists, giving drivers more time to safely slow down, move over, and avoid collisions with crews and fleets.

Alerts are intelligently delivered to right-side-of-road drivers up to 30 seconds in advance of a potential intersection with the alerting vehicle. Safety Cloud alerts are delivered from both moving vehicles and stopped vehicles, protecting responders and fleets both when they're en-route to a call and on-site at an incident.



# R2R<sup>™</sup> Responder-to-Responder Digital Alerting

Responder-to-Responder digital alerts enable public safety fleets equipped with Safety Cloud to alert one another of potential collisions at intersections and incidents, even across multiple agencies and departments..

To receive R2R alerts, a small indicator is mounted to the vehicle dashboard or pillar. Whenever a responding vehicle is on a potential collision course with another responding or on-scene emergency vehicle equipped with Safety Cloud, the indicator will flash and signal the operator up to 30 seconds in advance. This alert provides critical time for the responder to slow their speed and reduce the risk of a collision.



**Emergency vehicles approaching intersections alert any nearby fleets equipped with Safety Cloud**



**Responders receive advance warning of an impending responder collision so they can slow down and avoid impact**



# Connecting Your Fleet

Any public safety, utility, maintenance, towing, or municipal vehicle can connect to HAAS Alert Safety Cloud. Equipping is simple with multiple solutions available for fleets.

From easy-to-install hardware to hardware-less software integration, HAAS Alert has your back.



# PRE-INSTALLED

## Standard On New Apparatus

Safety Cloud is a standard safety feature on new custom apparatus from some of the world's leading manufacturers in public safety.

Aftermarket vehicles can also get equipped no matter the make or model, enabling complete protection for entire fleets. Contact HAAS Alert or your dealer to learn more about including Safety Cloud service with your next new rig or on current vehicles.



## HA-5 Transponder

The HA-5 transponder is simple to install and connects aftermarket vehicles and fleets to Safety Cloud, providing instant digital alerting capability and enhanced protection for crews. The HA-5 taps directly into the emergency lights or E-Master of any vehicle.

When emergency lights are activated, Safety Cloud continually transmits real-time digital alerts to nearby motorists and vehicles permitting them more time to slow down, move over, and make safe maneuvers to avoid crews anywhere in the field.

- Connects any vehicle and any lightbar
- 100% passive to crews and personnel
- No additional data plan
- Swappable for future network upgrades



### Dimensions

5.51" x 3.8" x 1.3"

# HA-D

## Direct Activation

For fleets already utilizing telematics, CAD, or GPS systems, a direct backend Safety Cloud integration enables service with no additional hardware required. HAAS Alert can provide custom integrations of Safety Cloud service for most new systems.

- No hardware or installation necessary
- Integrates with existing systems for enhanced service
- No platform migrations required

### Rapid Activation With Industry-Leading Providers



## R2R

### Responder-to-Responder Dash Indicator

The R2R LED Indicator notifies responders when a collision with another responding or on-scene emergency vehicle is imminent. The indicator will blink up to 30 seconds in advance of a potential intersection, enabling the vehicle operator to reduce speed or change course to prevent a collision.

Adding R2R alerting requires no additional wiring, the indicator simply plugs into the HA-5 transponder and gets mounted securely to the dash or pillar(s).

- Compatible with any HA-5 equipped vehicle and some HA-D integrations
- Mountable on either A-Pillar for larger vehicles or single LED dash mount
- Visual blinking alert warns driver and crew
- Interoperable alerting for Safety Cloud equipped departments and agencies

#### Dimensions

2.28" x 1.33" x .95"



# Additional Features

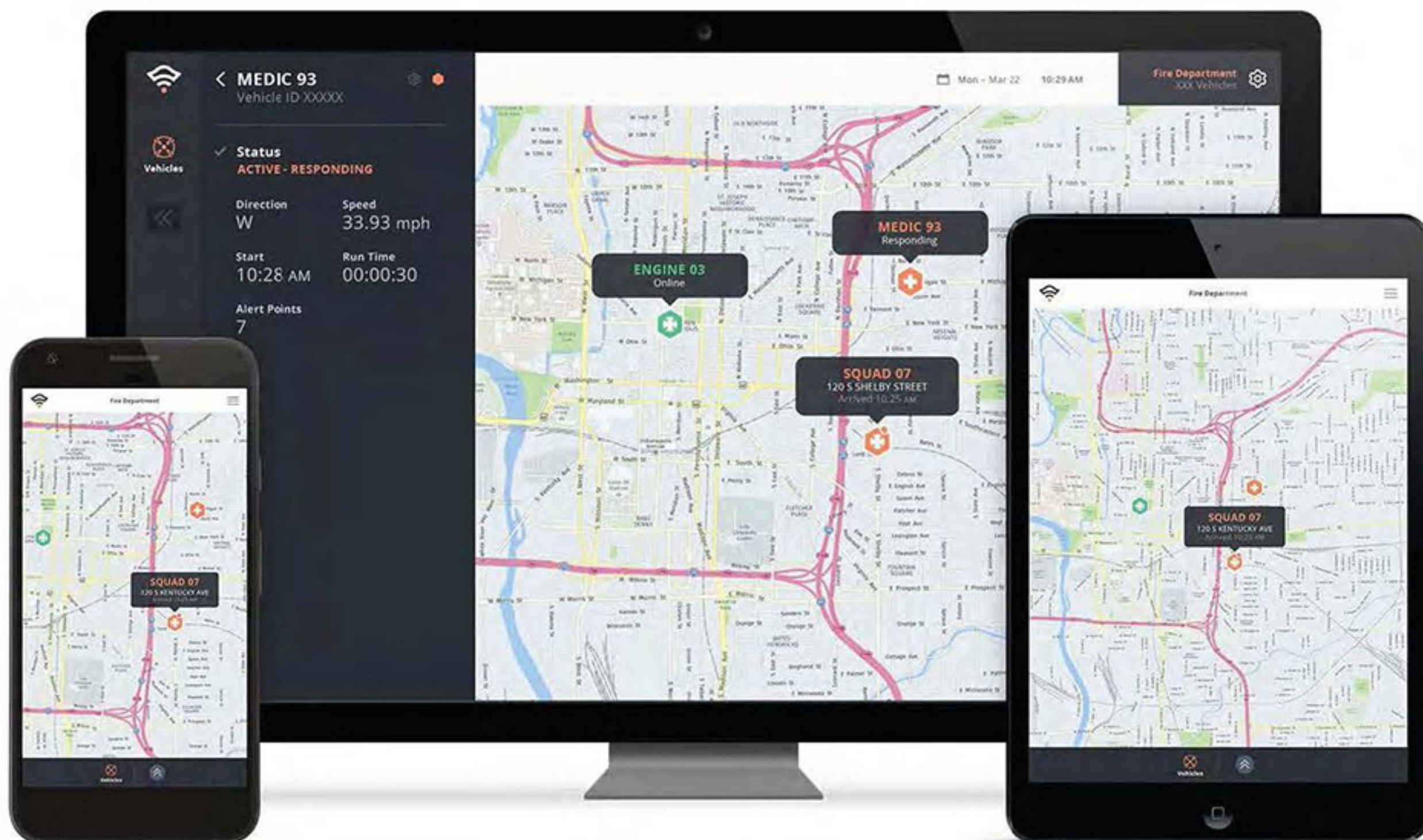
Along with the critical protection of real-time digital alerting and the most advanced collision prevention service available today, HAAS Alert offers powerful tools out-of-the-box to customize situational awareness, manage vehicles, and coordinate daily fleet operations.



# Situational Awareness Dashboard

Manage your fleet in real-time with a fully customizable dashboard that displays location and status of every Safety Cloud equipped vehicle. Standard features include visibility into response time, on-scene duration, and motorists alerted.

- **Customizable** – Permission users, nickname assets, set preferences, and more
- **Event History** – Export customizable records, review historical trends over time
- **Interoperable** – Coordinate and share with other or nearby jurisdictions
- **Designed for Mobility** – View on any device



## Performance Metrics

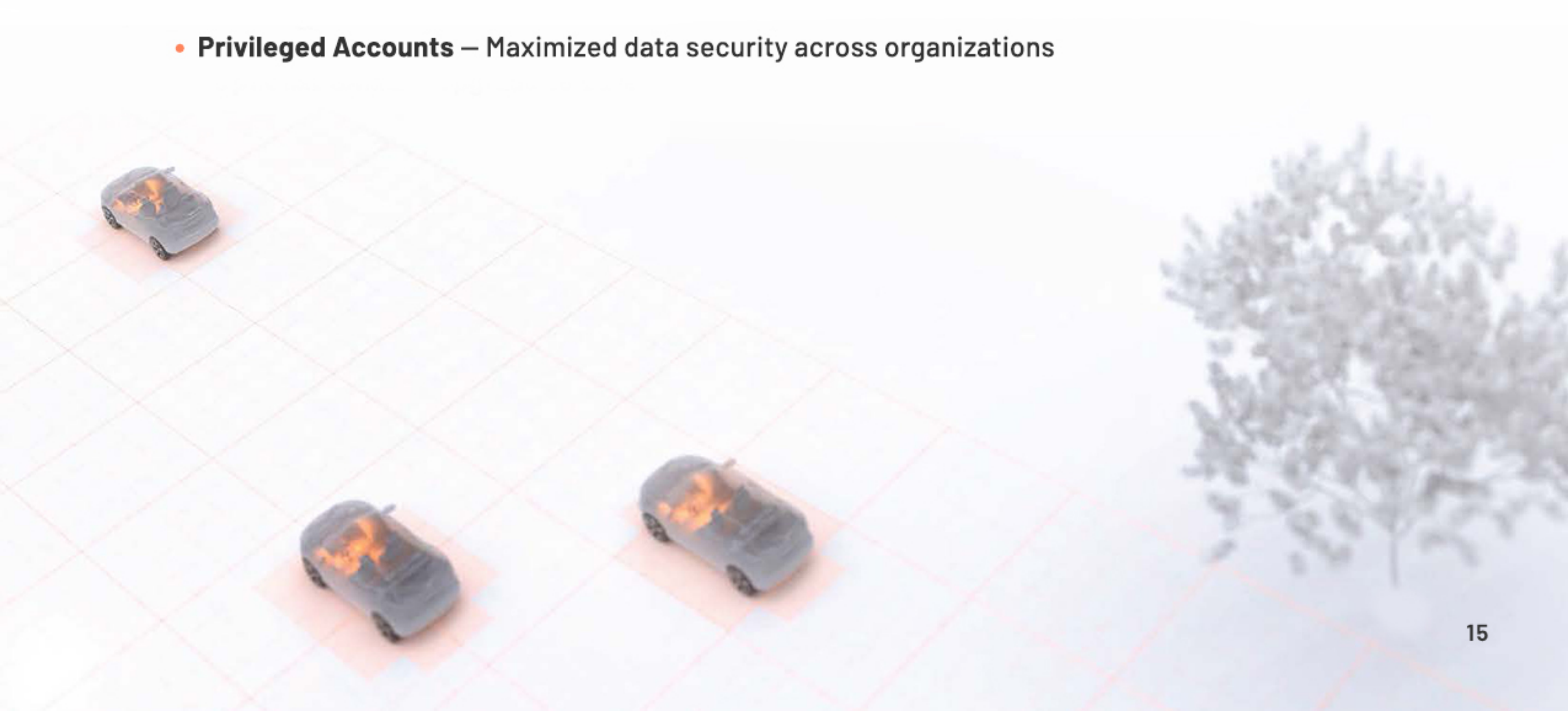
Access regular reports loaded with critical data and insights uniquely available through Safety Cloud. Harness key indicators to inform future planning, and identify trends to optimize response performance and operations.

- **Statistics** – Drivers alerted, events, calls, time-to-scene, time-on-scene, and more
- **Prepared For You** – Reports delivered monthly
- **Verifiable Insight** – Monitor performance with objective data

## Trusted Security

HAAS Alert Safety Cloud is built on modern platforms with the most advanced tools. Real-time data is fully encrypted both in-motion as well as at-rest to shield unauthorized access and malicious intent.

- **Powered by AWS** – Industry-leading data privacy and protection
- **Sophisticated Security** – Anomaly and intrusion detection provides 24-7-365 vigilance
- **Privileged Accounts** – Maximized data security across organizations



# FleetFusion™

## Unlock New Use Cases For Your Safety Cloud Data

Integrate a streaming feed of structured, real-time vehicle and asset data from Safety Cloud with your existing third-party applications. Enrich internal systems and dashboards (e.g., ESRI / ArcGIS), traffic management centers, and more.



### Traffic Incident Management Centers

Integrate hazards and emergency response with existing data feeds.



### Interoperable Jurisdictions

Share and receive access to fleet and real-time event information.



### Variable Messaging

Trigger automated messaging based on real-time events.



### Real-Time Traffic Dispatch

Factor timely emergency events into traffic routing and trends.






# SAFETY CLOUD<sup>®</sup>

POWERED BY HAAS ALERT


**sales@haasalert.com**  
**(833) 433-HAAS**

 [haasalert.com](https://haasalert.com)

 /haasalert

 @haasalert

 /company/haasalert

 @haasalert

