



1ST IN EMERGENCY PRODUCTS

YOUR FIRST CHOICE!



2020
EDITION

973.900.1212
WWW.1STINPRODUCTS.COM



YOUR FIRST CHOICE!

We understand that the organization and security of your equipment is fundamental for the success of your mission. With that in mind, 1st In Emergency Products was founded to manufacture purpose-built storage solutions for the emergency services.

With the help of its experienced and dedicated staff, 1st In has managed to reach new horizons. Our New Jersey headquarters has grown allowing us to better serve our expanded network of partners throughout the United States and Canada.

This has allowed us to continue to develop and improve our product offerings.

It is our hope that with this catalog, you can familiarize yourself with our product line and fully understand why we should be your first choice.

BECOME AN AUTHORIZED DEALER
WWW.1STINPRODUCTS.COM



TABLE OF CONTENTS

4	Why 1st In Emergency Products
5	1st In Vs Competitors
6	Fire Services
7	Fire Quick Ship Cabinets
8	Fire Standard Designs
10	GEARsafe
12	Law Enforcement Cabinets
14	EMS Cabinets
16	Slide Out Cabinets
18	Drone Cabinets
20	Consoles
23	Overhead Consoles / Brackets
24	Replacement Floors / Electronic Compartments
25	Plastic Line
28	Options
30	What people are saying?
31	CA Proposition 65 Warning



*Price and equipment specifications subject to change without prior notice. For more information, please contact us!



WHY 1ST IN EMERGENCY PRODUCTS SHOULD BE YOUR FIRST CHOICE

1 Design

Our products are designed with a 3D CAD program. This ensures that our products fit correctly. It also helps reduce waste and the impact on the environment.

2 Joint Construction

Our joint construction is what makes our cabinets strong and durable. We utilize traditional joinery methods such as dados and rabbets on all of our joints. These methods have been proven to stand the test of time. Combining these joints with our specialized 3M polyurethane based glue creates a bond that allows flexibility without compromising strength or durability.

3 Faceplates

Our drawer faces, radio faceplates, and dividers are all manufactured from a marine grade HDPE plastic. This material provides superior scratch and impact resistance. It is UV stable and will not rot or swell. It is extremely easy to clean and machine, allowing us to manufacture a wide variety of options for our customers.

4 Drawer Slides



5 Production

Our manufacturing process utilizes a CNC router to ensure accuracy and strength. It also allows for precise replication. Each component is constructed from 3/4 inch premium grade plywood.

6 Scorpion X02

Scorpion X02 is a polyurethane based coating system that is designed to provide tough and durable protection. This coating ensures that our cabinets will be able to stand up to extreme conditions for years to come. It does this by providing excellent abrasion resistance, high tensile strength, and superior tear resistance properties.

7 Finish Preparation

All of the products are profiled and sanded to ensure a seamless and uniform finish.



LIMITED LIFETIME WARRANTY*

Drawer slides are one of the most important components in a cabinet. We use only heavy duty Accuride drawer slides, standard within the fire apparatus industry, rated for up to 600 pounds. These slides have a *limited lifetime warranty, which adds value to the cabinet. There is an available built-in latch which will lock the drawer closed or fully extended.

*See Manufacturer's website for details.



CHECK OUT THE DIFFERENCE AND DISCOVER WHY
WE SHOULD BE YOUR FIRST CHOICE!



**OTHER
MANUFACTURERS**

JOINT CONSTRUCTION

- Rabbets and dados
- Modern screws
- Polyurethane-based glue
- Solid construction
- No noise
- 3/4 inch premium hardwood plywood

- No joint construction
- No glue
- Screwed or stapled together
- Weakness over time causes that squeak you hear while driving.

DRAWER SLIDES

- 600lb capacity
- Heavy-duty drawer slides
- Limited Lifetime Warranty

- 100lb drawer slides
- Slides are not emergency service rated.

COATING

- Durable and easier to clean
- Excellent abrasion resistance

- High pressure coating systems cause finer rougher texture.
- Carpet traps water, and contaminants
- Hard to decontaminate
- Edges expand and contract

FACEPLATE AND ACCESSORIES

- Scratch and Impact resistant
- Manufactured from a Marine-grade HDPE plastic

- Marine-grade HDPE plastic

NFPA 1851 compliance assistance

- Passive ventilated compartment (Always working)
- Fit most SUV platforms
- No drilling holes in the vehicle
- Customizable

- Requires a fan and power source
- May be limited to certain vehicles
- Requires a hole in the vehicle

**Quality for
the best
price.**



FIRE SERVICES

After years of experience, we have gained an understanding of what is really needed in a functional Fire Service vehicle.

This allows us to offer practical and effective options to keep your gear organized and ready for immediate use.



FIRE SERVICE

QUICK SHIP CABINETS

QUICK



FC-100

- Ratcheting Command Board
- Radio Faceplate
- 2 Cubbies

Warning: California Proposition 65

QUICK



FC-103

- Ratcheting Command Board
- Radio Faceplate
- 2 Tall Cubbies

Warning: California Proposition 65

QUICK



FC-101

- Ratcheting Command Board
- Radio Faceplate
- Sundry Drawer
- 1 Cubby

Warning: California Proposition 65

QUICK



FC-104

- Ratcheting Command Board
- Radio Faceplate
- File Drawer
- Tall Cubby

Warning: California Proposition 65

QUICK



FC-102

- Ratcheting Command Board
- Radio Faceplate
- 2 Sundry Drawers

Warning: California Proposition 65

QUICK



FC-105

- Ratcheting Command Board
- Radio Faceplate
- File Drawer
- Sundry Drawer
- Adjustable Shelf

Warning: California Proposition 65

All of our Command Boards are Magnetic Dry Erase Standard!



*FIRE COMMAND CABINET / FC-104



Scan to check out
MORE OPTIONS!

STANDARD DESIGNS

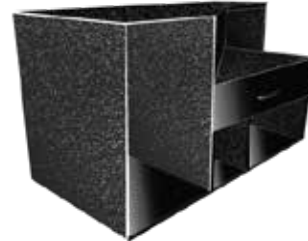
NEW



FC-106

- Ratcheting Command Board
- 2 Cubbies
- Large Storage Area

Warning: California Proposition 65



FC-202

- Ratcheting Command Board
- Radio Faceplate
- Extinguisher Storage
- Gear Compartment
- 1 Cubby

Warning: California Proposition 65

NEW



FC-107

- Ratcheting Command Board
- File Drawer
- 1 Cubby
- Large Storage Area

Warning: California Proposition 65



FC-400

- Ratcheting Command Board
- Radio Faceplate
- File Drawer
- 2 Sundry Drawers

Warning: California Proposition 65



FC-200

- Ratcheting Command Board
- Radio Faceplate
- 2 Cubbies

Warning: California Proposition 65



FC-401

- Ratcheting Command Board
- Radio Faceplate
- Extinguisher Storage
- 2 Large Cubbies

Warning: California Proposition 65



FC-201

- Ratcheting Command Board
- Radio Faceplate
- File Drawer
- 1 Cubby

Warning: California Proposition 65



FC-402

- Ratcheting Command Board
- Radio Faceplate
- File Drawer
- SCBA or Tool Board Pull Out

Warning: California Proposition 65

TOTAL DECON KIT

In order to promote cancer awareness, we are sending a Kit with every Fire Command cabinet sold, to assist you in decontaminating your gear and reducing your exposure to carcinogens.

This Kit contains:

- 3x RESPONDER WIPES CHIEF SIZE
- 1x RESPONDER WIPES LIEUTENANT SIZE
- 1x CITROSQUEEZE®
- 1x SC-14®
- 2x BAGS





***Custom Design?
We can help you!***

We have a dedicated staff to create a custom cabinet to accommodate your specific needs.



Scan to check out
MORE OPTIONS!



GEARsafe

**MORE THAN JUST A PRODUCT,
YOUR HEALTH FIRST!**



GEARsafe is a filtered compartment that will assist you with transporting your gear from the fire scene back to the station for decontamination based on NFPA 1851 guidelines.

Need a Custom Design? Just Ask.

- Wide spectrum filter designed for fire service
- Sealed latch and door
- Passive Ventilation, no fan needed (Always Working)
- Easy filter maintenance
- Fits into existing cabinet designs
- Easy compartment clean out with Scorpion Coating
- Keep your gear separate from the vehicle cabin
- Designed to assist you in complying with NFPA 1851



Custom Design available for Tahoe, Suburban, Expedition, Interceptor Utility, Yukon, Durango, and more!

STANDARD DESIGNS



FC-GS-1

- Filtered Compartment
- Sealed Latch and Door
- Ratcheting Magnetic Command
- Storage Area
- Radio Faceplate

 Warning: California Proposition 65



FC-GS-2

- Filtered Compartment
- Sealed Latch and Door
- File Drawer
- Sundry Drawer
- Ratcheting Magnetic Command
- Radio Faceplate
- 2 Extinguisher Storage

 Warning: California Proposition 65



FC-GS-3

- Filtered Compartment
- Sealed Latch and Door
- Pull Out Tray
- Ratcheting Magnetic Command
- Storage Area
- Radio Faceplate
- Extinguisher Storage

 Warning: California Proposition 65



FC-GS-4

- Filtered Compartment
- Sealed Latch and Door
- Adjustable Shelf
- Side Flip Ratcheting Magnetic Command
- Radio Faceplate
- 2 Extinguisher Storage

 Warning: California Proposition 65



Check out our Website
FOR MORE INFORMATION!



In order to further promote the importance of cancer awareness, we are committed to donating \$100.00 of every GEARSafe sale to the Carney Strong Initiative.

LAW ENFORCEMENT

A complete Law Enforcement cabinet line for you!



Scan to check out
MORE OPTIONS!



SAFE AND SECURE STORAGE

The safety and security of your weapons and gear are the top priority. Our designs allow for fleet wide consistency and provide customizable solutions to effectively handle any emergency scene.



WC-100

- Weapons Cabinet
- For Tahoe / Suburban / Expedition

Optional
Foam
Simplex Lock

Warning: California Proposition 65



WC-103

- Weapons Cabinet
- For Explorer / Utility
- File Drawer

Optional
Foam
Simplex Lock
Riser Bracket

Warning: California Proposition 65



WC-101

- Weapons Cabinet
- For Explorer / Utility

Optional
Foam
Simplex Lock
Riser Bracket

Warning: California Proposition 65



WC-104

- For Tahoe / Expedition
- Sundry Drawer
- 2 Small Sundry Drawers
- Storage Cubbies
- Rear Storage

Warning: California Proposition 65



WC-102

- Weapons Cabinet
- For Explorer / Utility
- Ratcheting Command Board

Optional
Foam
Simplex Lock
Riser Bracket

Warning: California Proposition 65



WC-105

- For Tahoe / Expedition
- 2 Weapons Drawer
- Simplex Lock

Optional
Foam

Warning: California Proposition 65



EMERGENCY MEDICAL CABINETS

With available features including temperature-controlled compartments and drawers with integrated glove dispensers, our EMS line is complete with all of the features needed to support your mission.

EMS CABINETS

STANDARD DESIGNS



EMC-100

- Sundry Drawer with Work Surface
- Backboard Storage

Optional
Adjustable Shelves

Warning: California Proposition 65



EMC-103

- Adjustable Shelves

Warning: California Proposition 65



EMC-101

- Sundry Drawer with Work Surface
- Backboard Storage
- Enclosed Cabinet with Shelves

Optional
Adjustable Shelves
Temperature Control

Warning: California Proposition 65



EMC-104

- Ratcheting Command Drawer
- File Drawer
- 2 Sundry Drawers
- Storage Cubby with Door

Optional
Temperature Control

Warning: California Proposition 65



EMC-102

- Ratcheting Command Drawer
- Radio Faceplate
- Storage Cubby with Door
- Folding Backboard Storage

Optional
Temperature Control

Warning: California Proposition 65

TEMPERATURE CONTROLLED SYSTEM

The PharmGuard system is a thermoelectric-based system for controlling the temperature of EMS drug storage cabinets and containers.

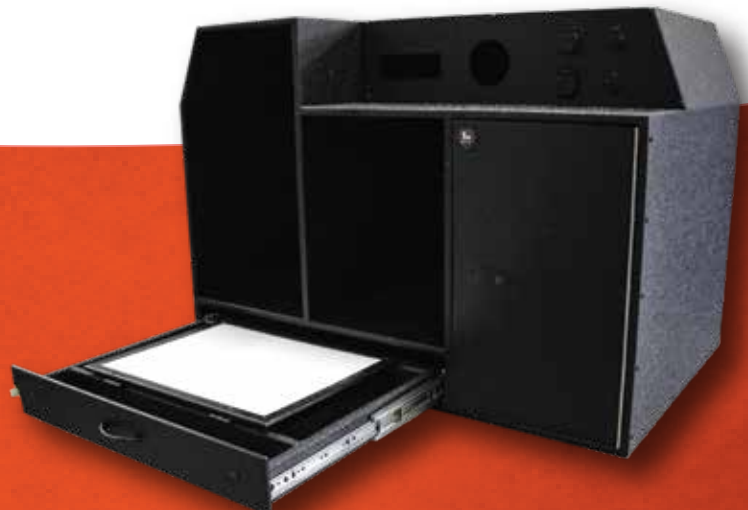
Note: Check out more options on pages 19 - 20.



Need a Custom Design?



Scan to check out
MORE OPTIONS!





SLIDE OUT CABINETS

More space and versatility for handling your equipment!



Slide Out

Benefits

With our Slide Out cabinet you are able to fit and transport more equipment, up to 2500lb weight capacity, and the most important thing, it's 100% extension!



More space
Weapons, gear, and equipment



Versatility for handling your equipment



Keep your equipment separate from passengers



100% Slide Out



2500lb^{UP} High Weight Capacity



Need a Custom Design?
Just ask us!



Scan to check out **MORE OPTIONS!**

THE DRONE GENERATION IS COMING!

Drones have been showing their capabilities to increase work efficiency and productivity in different industries. Their potential for assisting firefighters, law enforcement agencies or other services is evident.



UAS COMMAND CABINETS

Cabinets can be built for any make and model of SUV, van, truck, or specialty vehicle.



OPTIONS INCLUDE

- Large monitor
- Single slide out monitor
- Dual slide out monitor
- Tri slide out monitor
- Integrated 120-volt inverter
- 110v AC outlets
- 12v cigarette lighter power connection
- Emergency vehicle quality components
- Multiple HDMI inputs and outputs
- Multiple USB charging ports



Our UAS (or more commonly, drone) command cabinet can be integrated into our existing cabinet designs or we can create a design around your mission. With a wide array of monitor options from small and large single screen to multiple screens, we can provide the pilot and others with the information that they need during the operation.



Scan to
LEARN MORE!

CC-GMT

SERIES CONSOLES

- Carpet
- Scorpion
- Arm Rest
- Locked Compartments
- Speaker Mounting Locations
- Customizable Equipment Faceplate

Fits 2015-2020
CHEVY TAHOE / SUBURBAN / GMC YUKON



Standard CC-GMT 1

⚠ Warning: California Proposition 65



Standard pocket CC-GMT 2

⚠ Warning: California Proposition 65



Angled CC-GMT 3

⚠ Warning: California Proposition 65



Angled pocket CC-GMT 4

⚠ Warning: California Proposition 65



Angled pocket and arm rest CC-GMT 5

⚠ Warning: California Proposition 65



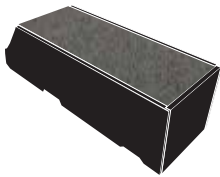
Angled with center pocket CC-GMT 6

⚠ Warning: California Proposition 65

Don't see what you need? Just Ask!

CENTER CONSOLE

CC-FF 4



Center Consoles for **FORD**

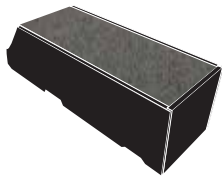
PART NUMBER	VEHICLE
CC-FF-1	2017+ Ford F Series and Expedition trucks (without factory console and with electronic 4x4 Shifter) Console includes a recessed black plastic faceplate.
CC-FF-2	2017+ Ford F Series and Expedition trucks (without factory console and with electronic 4x4 Shifter) Console includes a recessed black plastic faceplate and raised padded arm rest.
CC-FF-3	2017+ Ford F Series and Expedition trucks (without factory console and with electronic 4x4 Shifter) Console includes a recessed black plastic faceplate, and map pocket .
CC-FF-4	2017+ Ford F Series and Expedition trucks (without factory console and with electronic 4x4 Shifter) Console includes a recessed black plastic faceplate, and small map pocket .
CC-FFshift	2017+ Ford F Series trucks (without factory console and with manual 4x4 Shifter) Console includes a recessed black plastic faceplate.
CC-FIU	2013+ Ford Police Interceptor Utility (without factory console) Console includes a recessed black plastic faceplate.
CC-FIU20	2020+ Ford Police Interceptor Utility (without factory console) Console includes a recessed black plastic faceplate .

 Warning: California Proposition 65

*Don't see what you need? **Just ask us!***



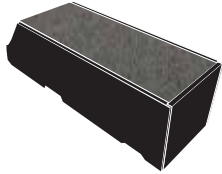
Scan to
LEARN MORE!



Center Consoles for **Chevy Silverado**

PART NUMBER	VEHICLE
CC-GM150019	2019+ Chevy Silverado 1500 (without factory console). Console includes a recessed black plastic faceplate.
CC-GM2500	2015-2019 Chevy Silverado 2500 (without factory console). Console includes a recessed black plastic faceplate.
CC-GM2500-FS	2015-2019 Chevy Silverado 2500 (without factory console and with floor shifter). Console includes a recessed black plastic faceplate.
CC-GM250020	2020+ Chevy Silverado 2500 (without factory console and with floor shifter). Console includes a recessed black plastic faceplate.
CC-GM250020-FS	2020+ Chevy Silverado 2500 (without factory console and with floor shifter). Console includes a recessed black plastic faceplate.

 Warning: California Proposition 65



Center Consoles for **Dodge Ram**

PART NUMBER	VEHICLE
CC-RAM3500	2009 - 2018 Dodge Ram 3500, and 2019 Classic (without factory console)
CC-RAM350019	2019+ Dodge Ram 3500, Non Classic (without factory console)

 Warning: California Proposition 65

CONSOLE INSERT

AVAILABLE FOR EXPEDITION 18+



Scan to
LEARN MORE!



OVERHEAD CONSOLE

OHC - GM

- Allows for mounting of two pieces of equipment
- Mounts to factory location
- Re-integrates factory basic options
- Options for speakers and dome lights
- Scorpion X02 coating

Fits 2015-2020

GMC / SUBURBAN / TAHOE / SILVERADO

STEALTH INTERSECTION BRACKETS

We have redesigned the bracket for improved durability, and to be more cost effective. It is still designed to bolt on the front license plate bracket of almost any vehicle, with little or no modification to the vehicle.

Stealth Intersection Bracket 2.0 1" thick



SOUND OFF
Signal

- HDPE plastic
- UV stable
- 9"1/2 W x 5"7/8 H x 1" D

The bracket has been designed to fit SoundOFF Signal mPower 4" and 3" lightheads that are either screw mount or quick mount, as well as other manufacturers 1" high lightheads.

***Bracket includes hardware and installation instructions.**

 Warning: California Proposition 65

Stealth Intersection Bracket 2.5 1.25" thick



SOUND OFF
Signal

WHILEN
FEDERAL SIGNAL
CODE 3

- HDPE plastic
- UV stable
- 9"1/2 W x 5"7/8 H x 1.25" D

The bracket has been designed to fit SoundOFF Signal, Whelen, Code 3, and Federal Signal lightheads that are either screw mount or quick mount, as well as other manufacturers 1.25" high lightheads.

***Bracket includes hardware and installation instructions.**

 Warning: California Proposition 65

REPLACEMENT FLOORS

Our Replacement Floors are designed to allow for the safe and proper mounting of our cabinets.

All of our replacement floors allow full access to the spare tire.



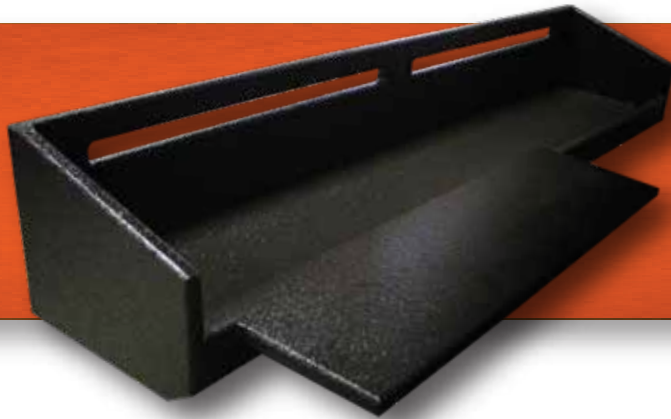
**Available
For**

Scan to
LEARN MORE!



PART NUMBER	VEHICLE
RP-DD-NC	2011-Present Dodge Durango - No Cage
RP-FEXPM-NC	2018+ Ford Expedition MAX Length - No Cage
RP-FEXP-NC	2018+ Ford Expedition (NON MAX Length) - No Cage
RP-FIU20-NC	2020+ Ford Interceptor Utility - No Cage
RP-FIU-NC	2013-2019 Ford Interceptor Utility - No Cage
RP-FIU-PG	2013-2019 Ford Interceptor Utility - ProGard Cage
RP-FIU-SETINA	2013-2019 Ford Interceptor Utility - Setina Cage

 Warning: California Proposition 65



**WE HAVE THE PERFECT SOLUTION FOR
YOUR ELECTRONIC COMPONENTS.**

The electronics compartment is ideal to organize all electronics equipment in a safe location and provide a clean factory appearance.

PART NUMBER	VEHICLE
EC-F150-SC	2015+ Ford F150 Series SuperCrew
EC-F-CC	2017+ Ford F Series CrewCab
EC-F-SC	2017+ Ford F Series SuperCab
EC-GM150019-CC	2019+ GM 1500 Series CrewCab
EC-GM1500-CC	2017-2019(Legacy) GM 1500 Series CrewCab
EC-GM250020-CC	2020 GM 2500-3500 Series CrewCab
EC-GM2500-CC	2015-2019 GM 2500-3500 Series CrewCab

 Warning: California Proposition 65



Scan to
LEARN MORE!



NEW

PLASTIC PRODUCTS LINE

ORGANIZATION IS THE KEY TO A SUCCESSFUL MISSION

Our new line is built with Marine Grade HDPE. It's a superior alternative to wood. Also, it's resistant to salt water, a wide range of chemicals, UV exposure, and unlike other alternatives, HDPE doesn't splinter, crack, delaminate, rot, swell or absorb water.

- *Dog House Organizer*
- *Glove Holder*
- *Fuel, Oil, and Aerosol Can Holder*
- *Chain Saw Mount*





DOG HOUSE ORGANIZER

The Dog House Organizer is a new product designed to help get organized during your mission.

DHO-1 FEATURES

- 2 Glove Holders
- 2 Cup Holders
- 1 Binder Pocket
- 2 Storage Trays
- 1 Large Adjustable Organizer

Dimensions: 22" W x 6" H x 21" D
Material: 1/2 HDPE Marine Board

 Warning: California Proposition 65



Scan to
LEARN MORE!

NEED A CUSTOM DESIGN?

CONTACT OUR TEAM TO HELP YOU!



Chain Saw Mount

Keep your compartment clean and organized.

You can mount chains saws, abrasive cut-offs saws, and other gasoline-engine tools on this specially designed product.

Specifically designed to retain replaceable absorbent pads to capture fluids, and keep your vehicle cleaner.

Our Chain Saw Mount has a heavy-duty adjustable strap with seat belt release to secure your equipment properly.



Model SAW-1

 Warning: California Proposition 65



Glove Holder **Horizontal**

PART NUMBER	FEATURES
GHH-1	Glove Holder, horizontal mount, single box.
GHH-2	Glove Holder, horizontal mount, two boxes.
GHH-3	Glove Holder, horizontal mount, three boxes.

Warning: California Proposition 65

Glove Holder **Vertical**

PART NUMBER	FEATURES
GHV-1	Glove Holder, vertical mount, single box.
GHV-2	Glove Holder, vertical mount, two boxes.
GHV-3	Glove Holder, vertical mount, three boxes.

Warning: California Proposition 65



FUEL, OIL and AEROSOL CAN HOLDER

Single, Double and Triple!

*The same product can be used to hold
Fuel, Oil and Aerosol cans.*

**Features a place for bar wrench storage.*

Fuel, Oil, and Aerosol Can Holder

PART NUMBER	FEATURES
FOH-1	Fuel, Oil, and Aerosol Can Holder - Single
FOH-2	Fuel, Oil, and Aerosol Can Holder - Double
FOH-3	Fuel, Oil, and Aerosol Can Holder - Triple

Triple Fuel, Oil,
and Aerosol Can Holder



Warning: California Proposition 65

Contact our Sales Team: 973.900.1212 or sales@1stinproducts.com

OPTIONS

YOU CAN CUSTOMIZE YOUR PRODUCTS!

Radios in your command drawer is a good alternative for your mission!



SAFETY



ELECTRONIC LOCK
Check out the video



SIMPLEX LOCK



MAGNETIC DRY ERASE
drawer faces and cabinet doors

DRAWERS



SUNDRY DRAWERS



FILE DRAWERS



FILE DRAWERS
with Glove cut-outs



COMPARTMENT DOORS / SEALED



TEMPERATURE CONTROLLED COMPARTMENTS



RISER BRACKET KIT
for Ford Interceptor Utility

COMMAND BOARD



DUAL ACTION
command boards



SINGLE
command boards



VERTICAL LIFT
command boards



SIDE LIFT
command boards

POWER



12v



USB



SWITCHES



110v



LIFT UP SCBA BRACKETS AND GEAR PULL OUTS



CHECK OUT AVAILABLE COLOR OPTIONS

STANDARD



CUSTOM COLOR



SLIDE OUT MONITOR



SINGLE MONITOR



DOUBLE MONITOR



TRIPLE MONITOR



LARGE MONITOR

SURFACES



LIFT UP WRITING SURFACE
with Lexan over lay



RATCHETING WRITING
surfaces

ADJUSTABLE AREAS

You can **move** the Drawer Dividers and Shelves to **accommodate** your needs.



DRAWER DIVIDERS



SHELVES



CARGO NETTING
AND STRAPS



VENTILATED
COMPARTMENTS

NEW PARTNERSHIP!



1st In Emergency Products is proud to announce a partnership with Next Rung. In order to further promote the importance of mental health issues awareness, we are committed to donating **\$ 100** of every Next Rung Cabinet sale to the Next Rung.

AVAILABLE FOR ALL CABINETS
We can customize any cabinet with the Next Rung faceplate for you.



Scan to
LEARN MORE!



What people are saying?

"Sonny and I are super excited to have collaborated with 1st In Emergency Products and designed a custom trunk organizer for our new cruiser. From this point forward, there will be no more digging through piles of equipment because every piece of equipment now has a home."

Corporal Jason Frey and K-9 Sonny - Clinton CT, Police.



You wish, **we make!**

With our experienced team we can build a custom cabinet to fit your needs.

CA Proposition 65 Warning

What is CA Proposition 65?

Proposition 65 requires businesses to provide warnings to Californians about significant exposures to chemicals that cause cancer, birth defects or other reproductive harm. These chemicals can be in the products that Californians purchase, in their homes or workplaces, or that are released into the environment. By requiring that this information be provided, Proposition 65 enables Californians to make informed decisions about their exposures to these chemicals.

Proposition 65 also prohibits California businesses from knowingly discharging significant amounts of listed chemicals into sources of drinking water.

Proposition 65 requires California to publish a list of chemicals known to cause cancer, birth defects or other reproductive harm. This list, which must be updated at least once a year, has grown to include approximately 900 chemicals since it was first published in 1987.

Proposition 65 became law in November 1986, when California voters approved it by a 63-37 percent margin. The official name of Proposition 65 is the Safe Drinking Water and Toxic Enforcement Act of 1986.

For more information go to www.P65Warnings.ca.gov.



YOUR *FIRST* CHOICE!

1st Ave Unit 3
Haskell, NJ 07420

WWW.1STINPRODUCTS.COM

Follow us on our Social Media



Instagram



Facebook



Youtube



Twitter



Linkedin



Scan to get
OUR DIGITAL CATALOG

JUST SCAN
TO CONTACT US!



OFFICE
973.900.1212
WHERE TO FIND US / CONTACT US
WWW.1STINPRODUCTS.COM
SALES REPRESENTATIVE
SALES@1STINPRODUCTS.COM